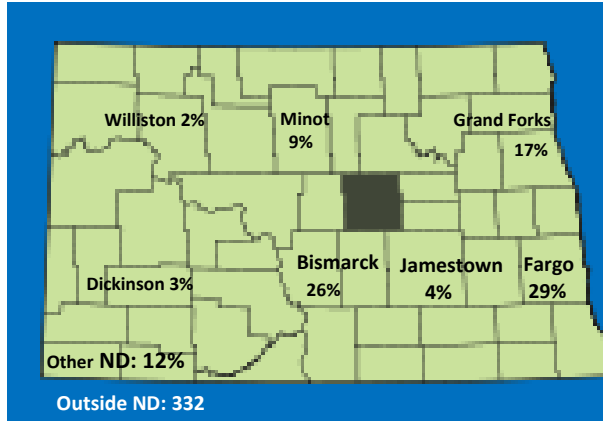


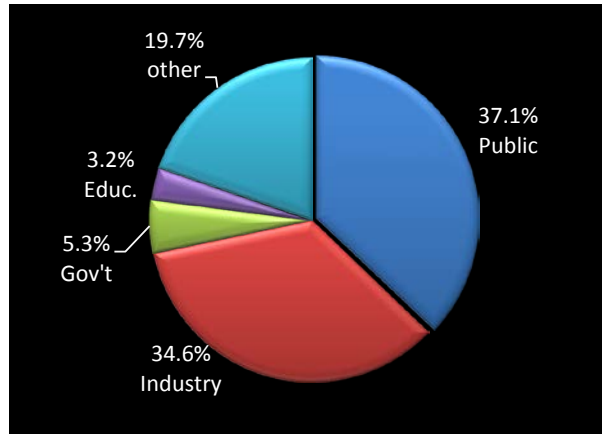
Members - by city

		<u>ND</u>	<u>%</u>
Fargo	434	28.5%	
Jamestown	59	3.9%	
Bismarck	391	25.7%	
Dickinson	47	3.1%	
Williston	32	2.1%	
Minot	132	8.7%	
Grand Forks	251	16.5%	
Other ND	176	11.6%	
Out-of-ND	332		
Total	1854	100.0%	
Total in ND	1522	82.1%	



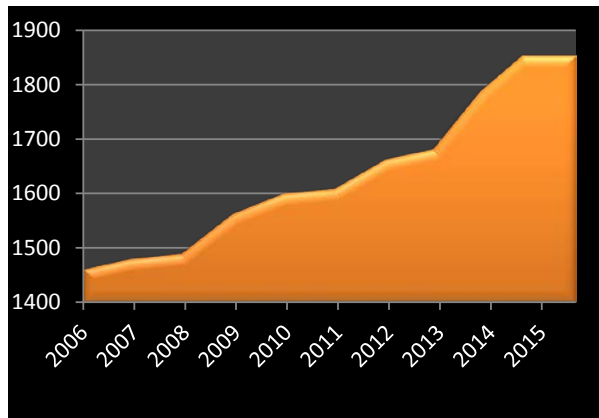
Members - by role

37.1%	Public	688
34.6%	Industry	642
5.3%	Gov't	98
3.2%	Education	60
19.7%	Other	<u>366</u>
		1854



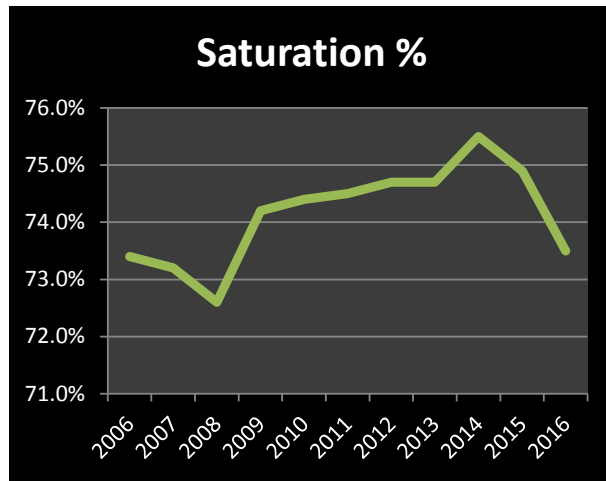
Membership growth

8/3/06	1462
7/5/07	1481
7/8/08	1491
7/15/09	1564
7/21/10	1601
7/8/11	1610
7/17/12	1664
6/28/13	1682
5/27/14	1788
3/27/15	1854
4/4/16	1854



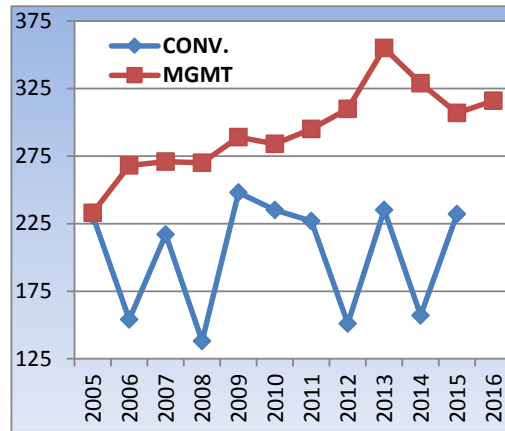
Saturation rate

2006	73.4%
2007	73.2%
2008	72.6%
2009	74.2%
2010	74.4%
2011	74.5%
2012	74.7%
2013	74.7%
2014	75.5%
2015	74.9%
2016	73.5%



Conference attendance

		CONV.	MGMT
Grand Forks	2005	231	233
Minot	2006	154	268
Fargo	2007	217	271
Medora	2008	138	270
Grand Forks	2009	248	289
Bismarck	2010	235	284
Fargo	2011	227	295
Minot	2012	151	310
Grand Forks	2013	235	355
Medora	2014	157	329
Fargo	2015	232	307
Bismarck	2016		316



Workshop attendance

2006	500
2007	500
2008	500
2009	500
2010	500
2011	500
2012	650
2013	700
2014	750
2015	600



Includes only 4 & 8 hour paid workshops

Members - by gender

44.0%	Female	816
56.0%	Male	1038
		1854

