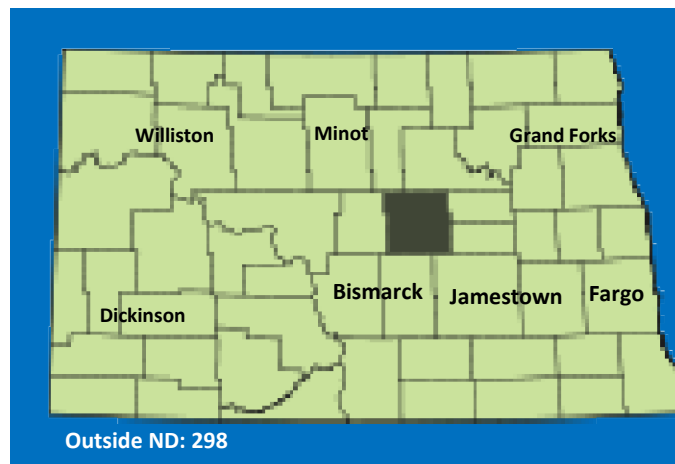


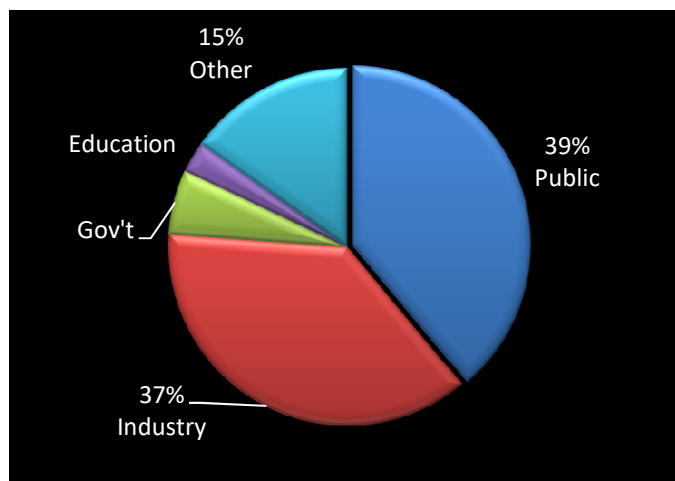
Members - by city

		<u>ND</u>	<u>%</u>
Fargo	433	29.5%	
Jamestown	50	3.4%	
Bismarck	377	25.7%	
Dickinson	53	3.6%	
Williston	29	2.0%	
Minot	130	8.9%	
Grand Forks	234	16.0%	
Other ND	161	11.0%	
Out-of-ND	322	-	
Total	1789	100.0%	
Total in ND	1467	82.0%	



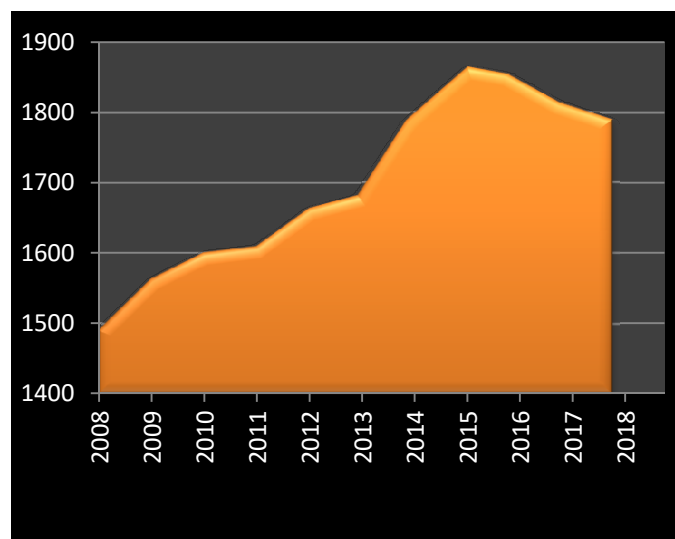
Members - by role

38.9%	Public	696
37.2%	Industry	666
5.8%	Gov't	104
2.9%	Education	51
15.2%	Other	<u>272</u>
		1789



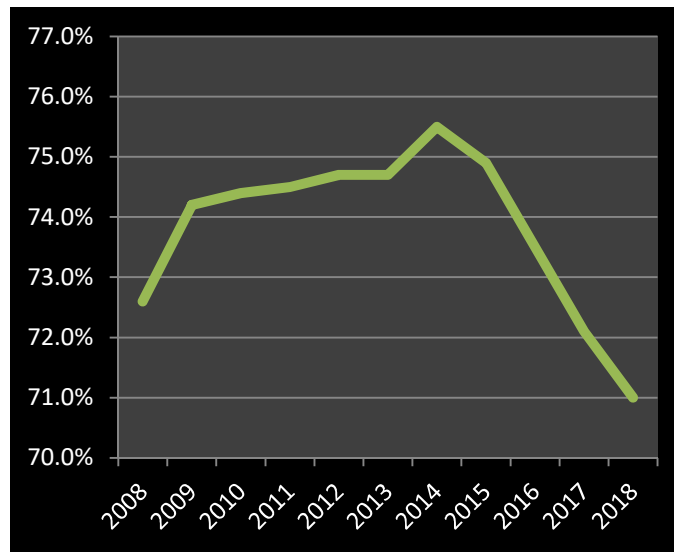
Membership growth

7/8/08	1491
7/15/09	1564
7/21/10	1601
7/8/11	1610
7/17/12	1664
6/28/13	1682
5/27/14	1788
7/31/15	1864
4/4/16	1854
4/5/17	1813
4/4/18	1789



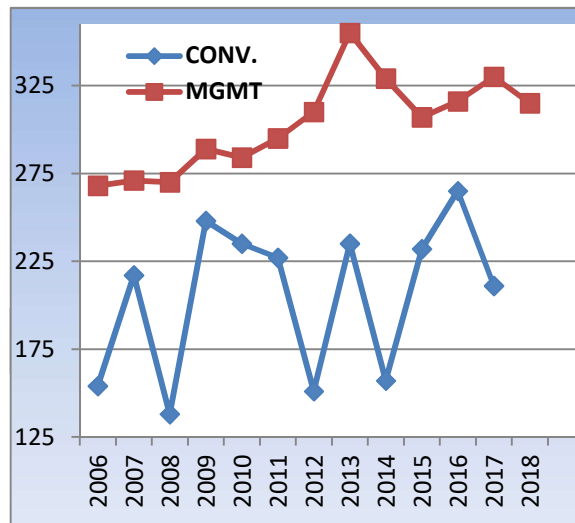
Saturation rate

2008	72.6%
2009	74.2%
2010	74.4%
2011	74.5%
2012	74.7%
2013	74.7%
2014	75.5%
2015	74.9%
2016	73.5%
2017	72.1%
2018	71.0%



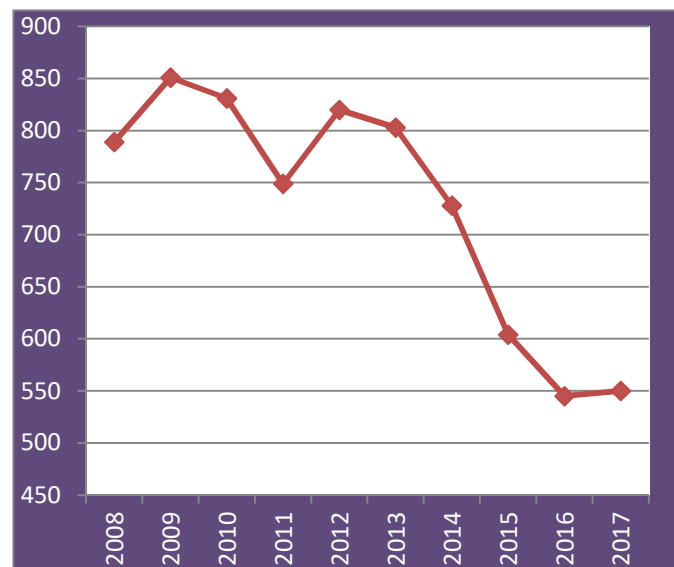
Conference attendance

	CONV.	MGMT	
Minot	2006	154	268
Fargo	2007	217	271
Medora	2008	138	270
Grand Forks	2009	248	289
Bismarck	2010	235	284
Fargo	2011	227	295
Minot	2012	151	310
Grand Forks	2013	235	355
Medora	2014	157	329
Fargo	2015	232	307
Bismarck	2016	265	316
Grand Forks	2017	211	330
Medora	2018		315



Workshop attendance

2006	684
2007	697
2008	789
2009	851
2010	831
2011	749
2012	820
2013	803
2014	728
2015	604
2016	545
2017	550



Includes only 4 & 8 hour paid workshops